



NORMANDY COMMUNITY SHOP AND CAFE LIMITED

ANNUAL GENERAL MEETING

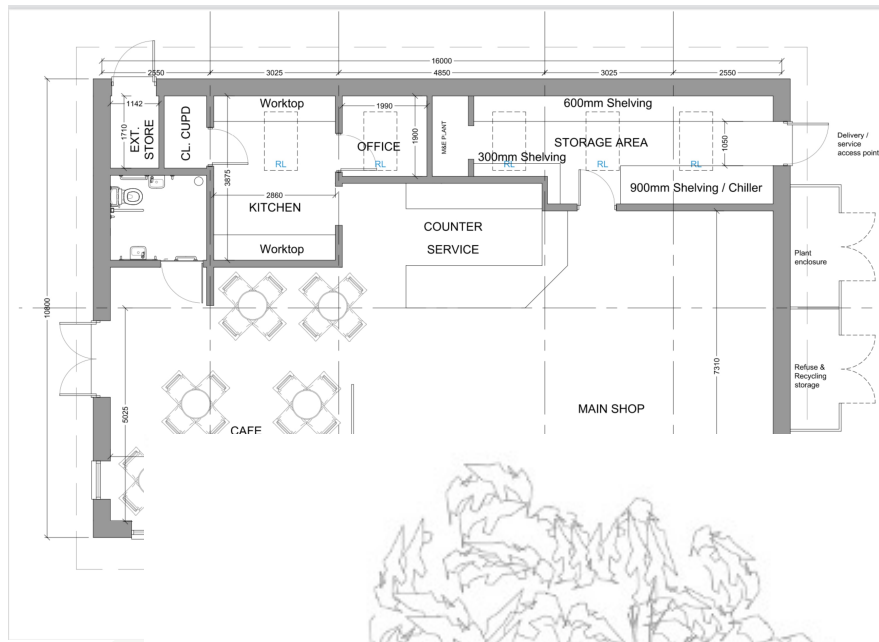
13TH JULY 2021

Agenda

- Introduction
- Resolutions regarding the conduct of the business
- Treasurer's Report
- Chairman's Report
- Questions

Achievements

- Planning permission granted
- Success of initial activities – Pop-Up Café, Cake Sale
- Pledge scheme – over £25,000 pledged
- Launch of Crowdfunder Community Share Scheme
- Strong support for YourFund initial application
- Selected by YourFund Team to submit Full Application
- On going success of Friday market



Location



Premises

Services & products

Produce

Dairy products, fresh bread, fresh fruit, chilled foods, frozen wholesome foods, drinks: fresh juice, soft drinks, wine/beer, fresh meat, dairy free produce, sweets: ice lollies, ice cream, biscuits, cakes, cleaning products, eco products

Cupboard items

Canned produce, essential cooking items, baking ingredients, cleaning products

Other items

Newspapers, charcoal, kindling, flowers

Local product

Locally grown vegetables (eg Therapy Garden), honey, local ice cream/dairy products, eggs, meat (Hunts Hill), fish (Tim Pleasants Fishmonger), beer (Hogs Back), cider, wine (Surrey/Sussex vineyards), seasoned logs

Crafts

Greeting cards, home made crafts, celebration cakes to order, artwork: paintings, pottery

Services

Basic post office services, dry cleaners, home deliveries, mini bus weekly pick ups, parcel collection and return, noticeboard, photocopying, order requested items (pay in advance), cobbler, recycling specific items (batteries), Pizza van evening

Cafe

Freshly made cakes, sandwiches, soups, tea and coffee, second phase salads, jacket potatoes etc

Other possibilities

Host book club, language classes, art classes. Hold bring and buy sales, special supplier events, WI/Local farmer style mornings, strawberry and cream/cream tea afternoons, cheese and wine tasting etc..



The Team



Bob Hutton
Chair



Gary Phillips
Society Secretary and Vice-chair



Jan Drake
Treasurer



Karen Dunn
Management Committee



Jill Spain
Management Committee



Paul Howarth
Management Committee



Briony Howarth
Management Committee



Thank you ...

- ... to my hard-working colleagues on the Management Committee
- ... to Les Asher (our architect) and Debbie Cass (our book-keeper)
- ... to former members of the Management Committee
- ... to the Parish Council for helping to get us off the ground
- ... to those who have helped us to develop our proposition
- ... to those who have invested, donated or supported us in any way
- ... to those who have spread the word